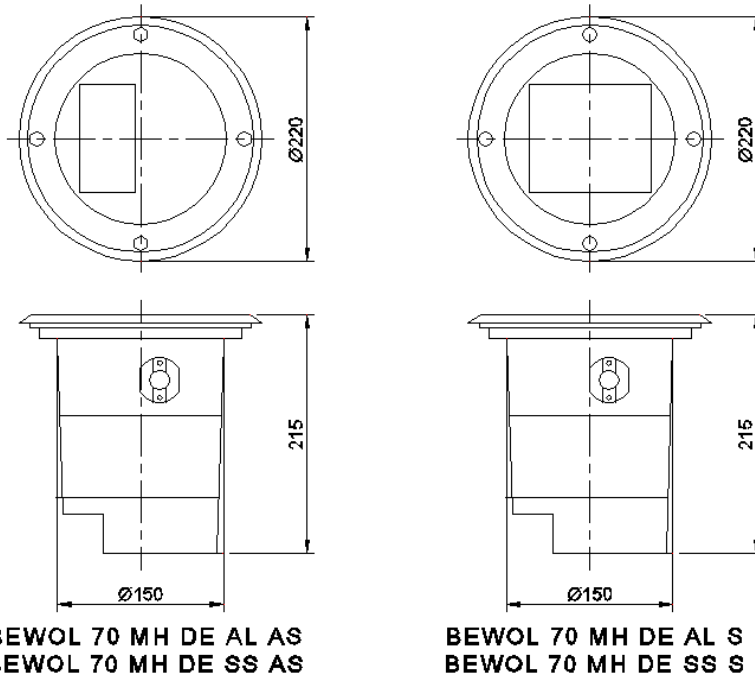




## LANDSCAPE LIGHTING

BEWOL 70 MH DE AL/SS S

BEWOL 70 MH DE AL/SS AS



NOMINAL DIMENSIONS IN mm Tolerance +/-5

## Features &amp; Benefits

- Recess floor mounted polyester powder coated die-cast aluminium housing  $\Rightarrow$  robust in construction, walk over luminaire.
- Stainless steel top frame fixed with symmetrical/asymmetrical beam reflector & clear glass fixed to the housing with SS screws  $\Rightarrow$  antiglare diffuse light.
- Wired with accessories for 70 MH DE lamp  $\Rightarrow$  energy efficient & low operating cost.

## Electrical Data

Cat. Ref.	Lamp Type & Wattage (W)	Nominal Voltage (V)	Mains Current in Amps. at 240 V	Capacitor Mfd.	Power Factor
BEWOL 70 MH DE AL S	MH DE 70	220/240	0.40	10	$\geq 0.85$
BEWOL 70 MH DE AL AS	MH DE 70	220/240	0.40	10	$\geq 0.85$
BEWOL 70 MH DE SS S	MH DE 70	220/240	0.40	10	$\geq 0.85$
BEWOL 70 MH DE SS AS	MH DE 70	220/240	0.40	10	$\geq 0.85$

Data subject to variation due to change/improvement in the design, materials and processes.

 <b>BAJAJ LUMINAIRES</b> <i>Making the difference</i>	DRAWN	KPM	05-02-2008	FOR – STD.
	CHECKED	DVRS		REV - 0 DATE-05-02-2008
	APPROVED	CRR		DRG.No
	DATA SHEET RELEASED ON DT-			<b>BEWOL 70 MH DE AL/SS-001</b>
<b>BAJAJ ELECTRICALS LIMITED</b> 15/17, SANT SAVTA MARG, REAY ROAD, MUMBAI-400 010.				* E-mail : <a href="mailto:luminaires@bajajelectricals.com">luminaires@bajajelectricals.com</a>