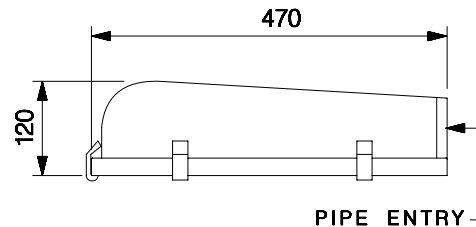




## ROADWAY LIGHTING

BGEST 02 70 SV/MH IP 65 FG



Max. width - 218

NOMINAL DIMENSIONS IN mm Tolerance +/-5

## Application

- Side roads
- Residential complexes
- Parks and gardens
- Small traffic roundabouts
- Security lighting, etc

## Specification

- Epoxy grey powder coated finish single piece pressure die-cast aluminium housing for lamp and C.G. accessories
- Electrochemically brightened, polished and **GLASKOTE**™ finish computer aided pot optic aluminium reflector for tubular lamp
- A heat resistant toughened clear glass and EPDM rubber gasket fixed with SS toggles
- Control gear for 70W HPSV/MH lamp, ES (E27) lamp holder prewired upto the terminal block
- Side entry mounting suitable for 40 to 50 mm OD pipe bracket
- Degree of protection : IP 65

## Electrical Data

Cat. Ref.	Lamp Type & Wattage (W)	Nominal Voltage (V)	Mains Current in Amps. At 240 V	Capacitor Mfd.	Power Factor
BGEST 02 70 SV/MH IP 65 FG	HPSV/MH T 70	220/240	0.40	10	≥ 0.85

Data subject to variation due to change/improvement in the design, materials and processes.

 <b>BAJAJ LUMINAIRES</b> <i>Making the difference</i>	DRAWN	VDS	03-04-2008	FOR - Std.
	CHECKED	KS		REV - 0 DATE-03-04-2008
	APPROVED	CRR		DRG. No
	DATA SHEET RELEASED ON DT-			EST 02 70 SV IP65 FG- 001
BAJAJ ELECTRICALS LIMITED 15/17, SANT SAVTA MARG, REAY ROAD, MUMBAI-400 010.				* E-mail : <a href="mailto:luminaires@bajajelectricals.com">luminaires@bajajelectricals.com</a>