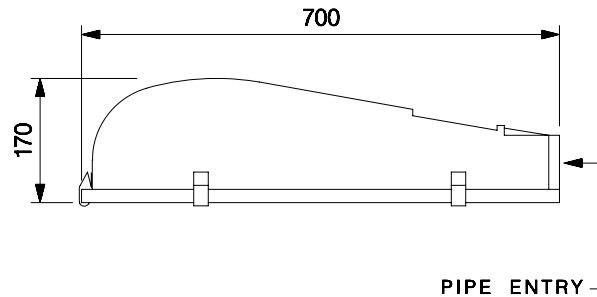




ROADWAY LIGHTING

BAJAJ BGEST 400 SV/MH IP65 FG SH



Max. width - 325

NOMINAL DIMENSIONS IN mm Tolerance +/-5

Application

- Highway
- Main roads
- Multi-level junctions
- Traffic roundabouts
- Civic centers, etc.

Specification

- Epoxy grey powder coated finish single piece die-cast aluminium housing for lamp and C.G. accessories.
- Electrochemically brightened, polished and **GLASKOTE™** finish computer aided pot optic aluminium reflector for tubular lamp
- A heat resistant toughened clear glass and EPDM rubber gasket fixed with SS toggles
- Control gear for 400W HPSV/MH lamp, GES (E40) lamp holder prewired upto the terminal block
- Side entry mounting suitable for 50 to 60 mm OD pipe bracket
- Degree of protection : IP 65

Electrical Data

Cat. Ref.	Lamp Type & Wattage (W)	Nominal Voltage (V)	Mains Current in Amps. At 240 V	Capacitor Mfd.	Power Factor
BGEST 400 SV/MH IP65 FG SH	HPSV/MH T 400	220/240	2.10	42	≥ 0.85

Data subject to variation due to change/improvement in the design, materials and processes.

 BAJAJ LUMINAIRE <i>Making the difference</i>	DRAWN	VDS	04-04-2008	FOR - STD.
	CHECKED	KS		REV - 0 DATE-04-04-2008
	APPROVED	CRR		DRG. No
	DATA SHEET RELEASED ON DT-			EST 250 SV IP65 FG - 001
BAJAJ ELECTRICALS LIMITED 15/17, SANT SAVTA MARG, REAY ROAD, MUMBAI-400 010.				* E-mail : luminaires@bajajelectricals.com