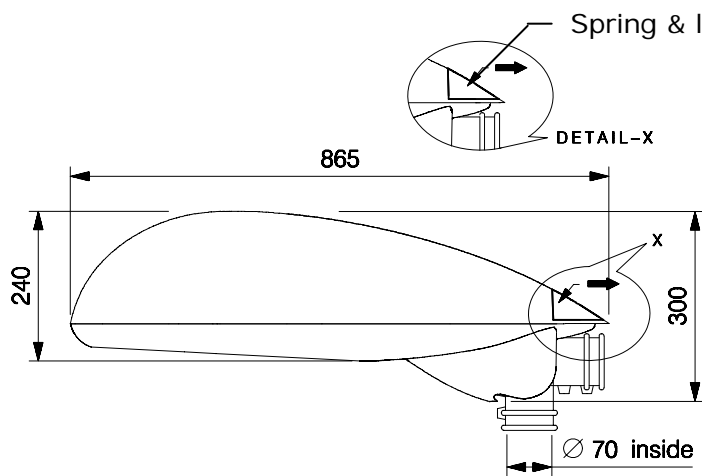




ROADWAY LIGHTING

**BAJAJ** BGJRL 250/400 SV/MH FFG

JET



Max. width - 380

NOMINAL DIMENSIONS IN mm Tolerance +/-5

**Applications**

- Highway, Main roads
- Multi-level junctions, Traffic roundabouts, Civic centres etc.

**Specification**

- Epoxy cream powder coated die-cast aluminium bottom frame and cool blue powder coated top cover.
- Totally sealed lamp compartment with electrochemically brightened, polished and **GLASKOTE™** finish computer aided pot optic aluminium reflector.
- Heat resistant toughened clear glass.
- Synthetic rubber gasket.
- Control gear suitable for 250/400 SV/MH lamp, GES (E-40) lamp holder prewired upto the terminal block.
- Side entry mounting suitable for 50 to 60 mm OD pipe bracket.
- Mounting spigot with provision for pole / Side mounting with tilt angle adjustment.
- Spring and latch locking arrangement for fixing the cover with frame.
- Maintenance from top. Top cover to be open by pulling the spring latch for lamp & accessories maintenance.
- Degree of protection: IP 66 Lamp compartment
- Degree of protection: IP 54 Control gear compartment

**Electrical Data**

Product code no.	Cat. Ref.	Lamp Type & Wattage (W)	Nominal Voltage (V)	Mains Current in Amps. At 240 V	Capacitor Mfd.	Power Factor
180315	BGJRL 250 SV FFG	HPSV-T 250	220/240	1.30	30	≥ 0.85
180314	BGJRL 250 MH FFG	MH-T 250	220/240	1.30	30	≥ 0.85
180298	BGJRL 400 SV FFG	HPSV-T 400	220/240	2.10	42	≥ 0.85
180299	BGJRL 400 MH FFG	MH-T 400	220/240	2.10	42	≥ 0.85

Data subject to variation due to change/improvement in the design, materials and processes.

<p><b>BAJAJ LUMINAIRE</b> Making the difference</p>	DRAWN	VDS	15-05-2008	FOR – Std.
	CHECKED	KS		REV - 0 DATE-15-0-2005
	APPROVED	CRR		DRG. No
	DATA SHEET RELEASED ON DT-			JRL 250/400 SV/MH FFG-001