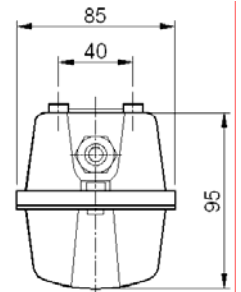
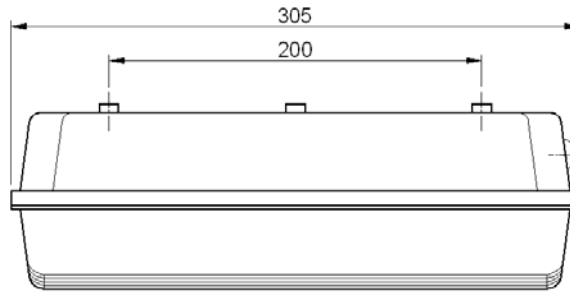




CFL BULKHEAD LUMINAIRE "PEARL"

BJCB 111/118 WEB



NOMINAL DIMENSIONS IN mm Tolerance +/-5

Application

Specially suitable for places where continuous light is required like

- Passages in hospitals & hotel lobby,
- Commercial complexes,
- Balconies & stair cases,
- Porches, etc.

Specification

- This CFL lamp bulkhead Luminaire comprises of housing made of ABS and cover made of polycarbonate.
- Clear polycarbonate cover is fixed to the housing by screws.
- CRCA gear tray cum reflector is finished in white powder coating.
- Engg. Plastic gland provided for cable entry.
- Completely prewired with accessories up to terminal block.
- Luminaire is suitable for single 11/18W CFL lamp.
- Wired with <30% THD plastic housing HF electronic ballast.
- Finish: Housing white.
- Degree of protection: IP 54

Note: - This luminaire can be offered with the above mentioned HF ballast only.

Electrical Data

Cat. Ref.	Lamp Type & Wattage (W)	Nominal Voltage (V)	Mains Current in Amps. at 240 V	Power Factor
BJCB 111 WEB	1 x CFL 11W	240	0.06	≥ 0.90
BJCB 118 WEB	1 x CFL 18W	240	0.08	≥ 0.90

Data subject to variation due to change/improvement in the design, materials and processes.

<p>BAJAJ LUMINAIRES Making the difference</p>	DRAWN	KPM	23-01-2009	FOR -
	CHECKED	DVRS		REV - 0 DATE-23-01-2009
	APPROVED	CRR		DRG.No
	DATA SHEET RELEASED ON DT-			BJCB 111/118 WEB - 001
BAJAJ ELECTRICALS LIMITED 15/17, SANT SAVTA MARG, REAY ROAD, MUMBAI-400 010.				* E-mail : luminaires@bajajelectricals.com