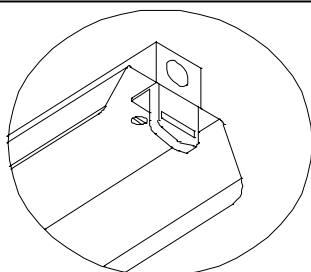




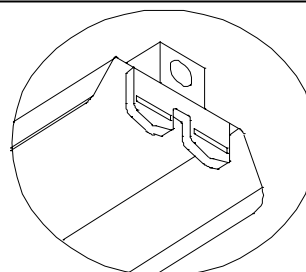
INDUSTRIAL LIGHTING

BJIE 136/140 WEB1

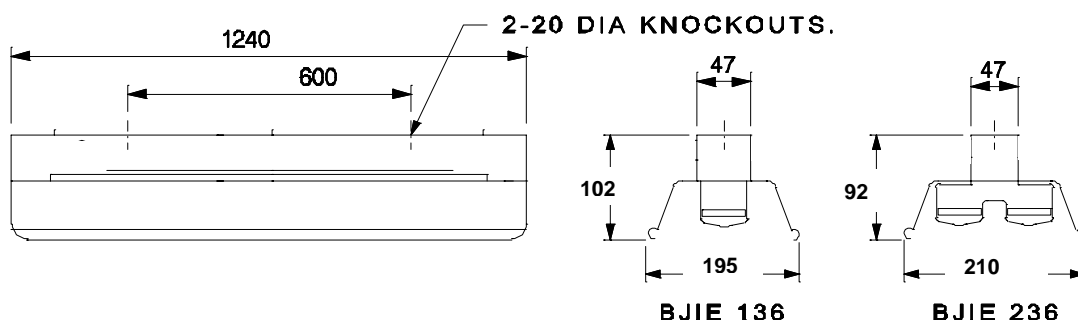
BJIE 236/240 WEB2



BJIE 136



BJIE 236



NOMINAL DIMENSIONS IN mm Tolerance +/-5

Application

These luminaires have an ideal distribution for low bays and are suitable for all normal industrial areas free from the presence of humidity or corrosive vapours.

Specification

- Comprises of basic industrial rail BJIR (Wired with electronic ballast) white powder coating and a reflector made from CRCA sheet steel finished in white powder coating.
- Two sliding clips permit easy removal of the reflector for cleaning.

Electrical Data

Cat. Ref.	Lamp Type & Wattage (W)	Nominal Voltage (V)	Mains Current in Amps. at 240 V	Power Factor
BJIE 136/140 WEB1	1 x FTL 36/40	240	0.15	0.95
BJIE 236/240 WEB2	2 x FTL 36/40	240	0.311	0.95

Data subject to variation due to change/improvement in the design, materials and processes.

<p>BAJAJ LUMINAIRES Making the difference</p>	DRAWN	VDS	16-03-2004	FOR – STD.
	CHECKED	DVRS		REV - 0 DATE-16-03-2004
	APPROVED	CRR		DRG.No
	DATA SHEET RELEASED ON DT-			IE 136/140 WEB - 001
BAJAJ ELECTRICALS LIMITED 15/17, SANT SAVTA MARG, REAY ROAD, MUMBAI-400 010.				* E-mail : luminaires@bajajelectricals.com