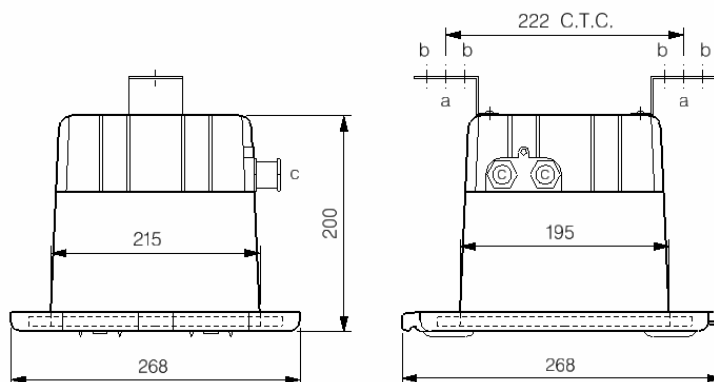




CANOPY LIGHTING - INTEGRAL LUMINAIRE

BJPP 11 70/150 S SHL

BJPP 11 70/150 AS SHL



a-2 Nos.19 mm holes for mtg.
 b-4 Nos. 8 mm dia.holes for mtg
 c-2 Nos. 19 mm ET cable gland

Dimensions in mm Tolerance +/-5

Specification

- Traffic white RAL 9016 powder coated recess mounting die-cast aluminium housing to accommodate lamp and control gear accessories
- Electrochemically brightened, polished and anodised aluminium reflector assembly
- Heat resistant toughened clear glass with silicon rubber gasket held in a die-cast aluminium frame and fixed to the body with the help of 2 nos. screws
- Mounting: It can be done on mounting brackets as shown
- Degree of protection : IP 65 (From front glass)
- Two breathing holes are provided on the housing for better heat dissipation

Note:

- The luminaire is suitable for Bajaj/GE/Philips/Osram MH DE/CDMT-D lamp.
- Only SV based lamp gear for 70/150 MH DE lamp is provided as per requirement.
- All hardware in SS.
- Loop in Loop out arrangement. (4 Way 10 Amp Glass filled nylon Terminal block)
- 2 Nos. single compression cable gland of 19 mm ET (5x2.5 Sq. MM YWY cable)

Electrical Data

Cat. Ref.	Lamp Type & Wattage (W)	Nominal Voltage (V)	Mains Current in Amps. at 240 V	Capacitor Mfd.	Power Factor
BJPP 11 70/150 MH DE S SHL	MH DE 70/150	220/240	0.40 / 0.80	10/20	≥ 0.85
BJPP 11 70/150 MH DE AS SHL	MH DE 70/150	220/240	0.40 / 0.80	10/20	≥ 0.85
BJPP 11 70/150 CDMT-D S SHL	CDMT-D 70/150	220/240	0.40 / 0.80	10/20	≥ 0.85
BJPP 11 70/150 CDMT-D AS SHL	CDMT-D 70/150	220/240	0.40 / 0.80	10/20	≥ 0.85

Data subject to variation due to change/improvement in the design, materials and processes.

<p>BAJAJ LUMINAIRE Making the difference</p>	DRAWN	VDS	04-11-2008	FOR - Std.
	CHECKED	KS		REV - 0 DATE-04-11-2008
	APPROVED	CRR		DRG. No
	DATA SHEET RELEASED ON DT-			PP 11 70/150 S SHL-001
BAJAJ ELECTRICALS LIMITED 15/17, SANT SAVTA MARG, REAY ROAD, MUMBAI-400 010.				* E-mail : luminaires@bajajelectricals.com