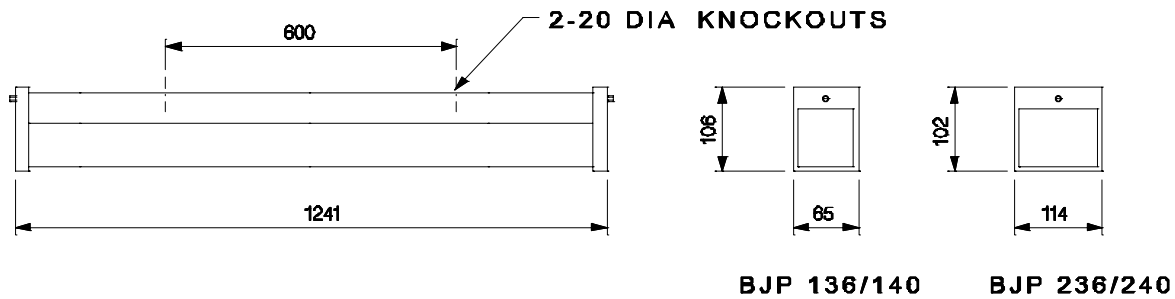
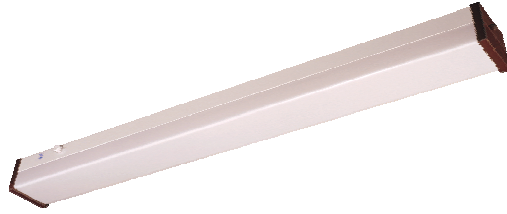




DECORATIVE LIGHTING

BJP 136/140 LHD

BJP 236/240 LHD



BJP 136/140

BJP 236/240

NOMINAL DIMENSIONS IN mm Tolerance +/-5

Application

A luminaire providing uniform and glare free light enhances the decor of any interior like offices, shops, conference rooms and other commercial establishments.

Specification

- C.R.C.A. sheet steel channel housing, Complete with control gear, Wired with new generation accessories upto a terminal block.
- Opal acrylic diffuser is supported by a pair of plastic end plates made of high impact polystyrene and fixed with decorative screw which facilitate easy removal for relamping or maintenance.
- The luminaire is suitable for wall, ceiling or pendant mounting.
- Wired with <10% THD HF electronic ballast.

FINISH: Housing - White powder coated.

Electrical Data

Cat. Ref.	Lamp Type & Wattage (W)	Nominal Voltage (V)	Mains Current at 240 V in Amps.	Power Factor
BJP 136/140 LHD	FTL 1x36/40W	240	0.156	≥ 0.99
BJP 236/240 LHD	FTL 2x36/40W	240	0.299	≥ 0.99

Data subject to variation due to change/improvement in the design, materials and processes.

<p>BAJAJ LUMINAIRES Making the difference</p>	DRAWN	VDS	08-12-2003	FOR - STD.
	CHECKED	AAS	08-12-2003	REV - 1 DATE-25-01-2008
	APPROVED	CRR	08-12-2003	DRG.No
	DATA SHEET RELEASED ON DT-			BJP 136/236 LHD - 001
BAJAJ ELECTRICALS LIMITED 15/17, SANT SAVTA MARG, REAY ROAD, MUMBAI-400 010.				* E-mail : luminaires@bajajelectricals.com