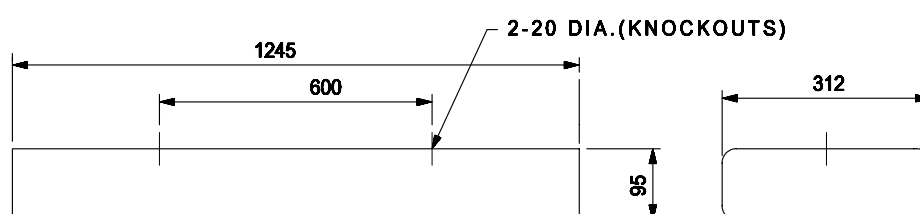
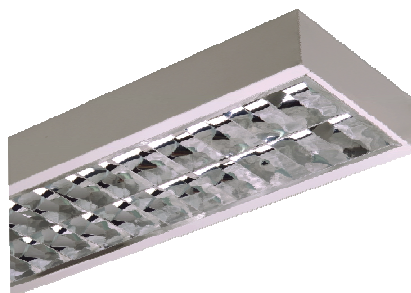




DECORATIVE LIGHTING

BJSDL 02 236 CAT II

BJSDL 02 236 CAT II WEB2



NOMINAL DIMENSIONS IN mm Tolerance +/-5

Application

CAT II- Mirror system, with high degree of glare control is suitable for high quality lighting with elegant appearance in offices, bank halls, sales and exhibition rooms where a high degree of visual comfort is required. They are specifically recommended for use in rooms in which mainly reading and writing tasks are carried out and which are equipped with video display terminals.

Specification

- The Surface mounting luminaire comprises of a CRCA steel sheet housing in which all accessories are mounted and wiring is terminated on to a terminal block. It is finished in white powder coating from inside and outside.
- The mirror louver is made from highly pre-anodised aluminium sheet. This parabolic mirror louver system provides luminous intensity distribution exactly adapted to the lighting task.

Features

The CAT II mirror system achieves limited luminances beyond a light emitting angle of 60 degree to the vertical in longitudinal and transverse directions of the luminaire due to double - parabolic longitudinal reflector and matched transverse reflectors. They create a limitation of the direct glare and avoid reflected images on vertical surfaces such as video display units.

Note:- The luminaire is wired with open construction ballast / HF electronic ballast.

Electrical Data

Cat. Ref.	Lamp Type & Wattage (W)	Nominal Voltage (V)	Mains Current in Amps. at 240 V	Capacitor Mfd.	Power Factor
BJSDL 02 236 CAT II	FTL 2x36	240	0.43	8.00	≥ 0.90
BJSDL 02 236 CAT II WEB2	FTL 2x36	240	0.311	--	≥ 0.95

Data subject to variation due to change/improvement in the design, materials and processes.

<p>BAJAJ LUMINAIRES Making the difference</p>	DRAWN	VDS	03-04-2006	FOR - STD.
	CHECKED	DVRS		REV - 1 DATE-25-01-2008
	APPROVED	CRR		DRG.No
	DATA SHEET RELEASED ON DT-			SDL 02 236 CAT II- 001
BAJAJ ELECTRICALS LIMITED 15/17, SANT SAVTA MARG, REAY ROAD, MUMBAI-400 010.				* E-mail : luminaires@bajajelectricals.com