



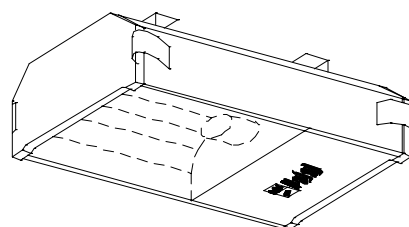
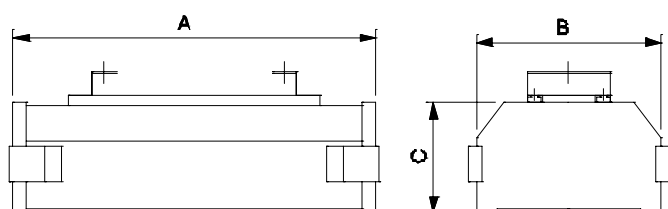
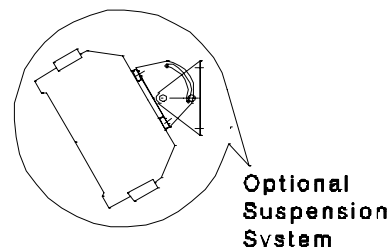
INDUSTRIAL LIGHTING

BJTL 70/150 SV-T/MH-SE

BJTL 250/400 SV/MH T

Integral tunnel champion for HPSV/MH-T/MH-SE Lamp

CAT. Ref.	A	B	C
BJTL 70 SV-T / MH-SE	355	224	115
BJTL 150 SV-T / MH-SE	435	224	115
BJTL 250 SV / MH-T	490	264	155
BJTL 400 SV / MH-T	520	264	155



NOMINAL DIMENSIONS IN mm Tolerance +/-5

Applications

- Docks, Mines
- Shopping mall basement
- Underground warehouse
- Railway platforms
- Car parking areas, Tunnels, etc.

Features

- Integral luminaire
- Compact focuslite
- Easy to install and maintain
- Electrical safety – Class I
- Degree of protection: IP 65

Specification

- Epoxy grey powder coated sheet aluminum fitted to the extruded aluminium section
- Anodised aluminium Reflector for uniform light distribution
- Heat resistant clear toughened glass inserted in extruded aluminium cross section
- Cast aluminium end plates hinged to the housing with stainless steel clamps
- Appropriate control gear for lamp is provided

Note : Suspension system with focusing adjustment in vertical plane can be provided

Electrical Data

Cat. Ref.	Lamp Type & Wattage (W)	Nominal Voltage (V)	Mains Current In Amps. At 240 V	Capacitor Mfd	Power Factor
BJTL 70 SV-T	HPSV-T 70	220/240	0.40	10	0.85
BJTL 70 MH-SE	MH-T 70	220/240	0.40	10	0.85
BJTL 150 SV-T	HPSV-T 150	220/240	0.80	20	0.85
BJTL 150 MH-SE	MH-T 150	220/240	0.80	20	0.85
BJTL 250 SV-T	HPSV-T 250	220/240	1.30	30	0.85
BJTL 250 MH T	MH-T 250	220/240	1.30	30	0.85
BJTL 400 SV-T	HPSV-T 400	220/240	2.10	42	0.85
BJTL 400 MH-T	MH-T 400	220/240	2.10	42	0.85

Data subject to variation due to change/improvement in the design, materials and processes.

<p>BAJAJ LUMINAIRE Making the difference</p>	DRAWN	VDS	22-06-2004	FOR – STD.
	CHECKED	AAS	22-06-2004	REV - 0 DATE-22-06-2004
	APPROVED	CRR	22-06-2004	DRG.No
	DATA SHEET RELEASED ON DT-			TL 400 SV/MH T - 001
BAJAJ ELECTRICALS LIMITED 15/17, SANT SAVTA MARG, REAY ROAD, MUMBAI-400 010.				* E-mail : luminaires@bajajelectricals.com