

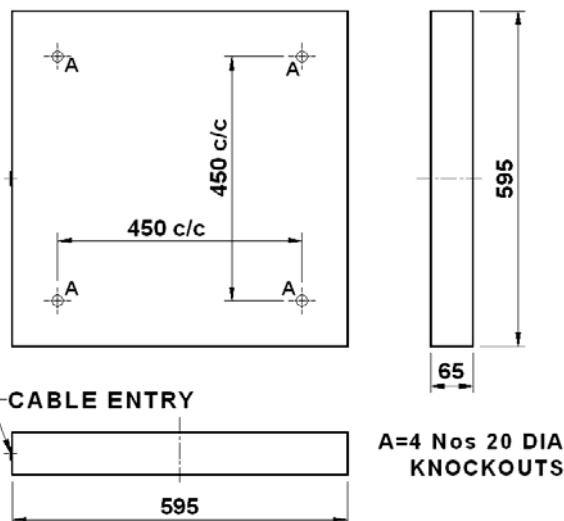


## INDUSTRIAL LIGHTING

## PLASMA

## BPSF 236/336/355 C LHD

Surface mounting FRONT OPENING clean room luminaire suitable for twin/triple CFL



Dimensions in mm Tolerance +/-5mm

## Applications

- Surface mounting Interior illumination in Pharmaceuticals, Food & Beverage industries, Electronic component manufacturing areas, laboratories, etc.

## Specification

- Epoxy white powder coated CRCA sheet steel housing
- High quality pre-anodised aluminium reflector
- Control gear and new generation accessories with < 10 % THD HF electronic ballast mounted on removable gear tray and pre-wired upto terminal block
- Clear acrylic cover is sealed with bottom frame & specially developed non-hygroscopic gasket to ensure foolproof dust/ particle protection
- Maintenance from front side
- Re-lamping through hingeable front cover
- Hardware S.S
- Environment Protection: - IP65

## Electrical Data

Product Code	Cat. Ref.	Lamp Type & Wattage (W)	Nominal Voltage (V)	Mains Current in Amps. at 240 V	Power Factor
530871	BPSF 236 C LHD	2 x CFL 36	240	0.303	≥ 0.99
530872	BPSF 336 C LHD	3 x CFL 36	240	0.303 + 0.152	≥ 0.99
--	BPSF 355 C LHD	3 x CFL 55	240	0.257 + 0.509	≥ 0.99

Data subject to variation due to change/improvement in the design, materials and processes.

<p><b>BAJAJ LUMINAIRE</b> Making the difference</p>	DRAWN	VDS	07-07-2007	FOR – STD.
	CHECKED	DVRS		REV - 1 DATE-02-05-2009
	APPROVED	CRR		DRG. No
	DATA SHEET RELEASED ON DT-			BPSF 236/336 C LHD-001
<b>BAJAJ ELECTRICALS LIMITED</b> 15/17, SANT SAVTA MARG, REAY ROAD, MUMBAI-400 010.				* E-mail : <a href="mailto:luminaires@bajajelectricals.com">luminaires@bajajelectricals.com</a>