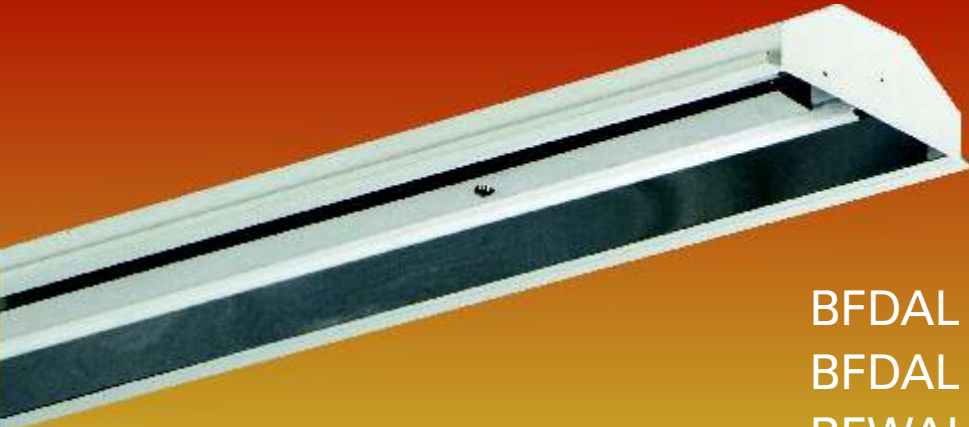


Lighting of Retail Spaces



FLEXITRON



BFDAL 214/224/228 LHD L

BFDAL 236 L

BFWAL 214/224/228 LHD L

BFWAL 236 L

Luminaire Body

Epoxy white powder coated CRCA sheet steel housing, with state-of-art specially designed clips for mounting on trunking system

Reflector

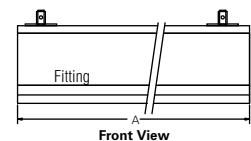
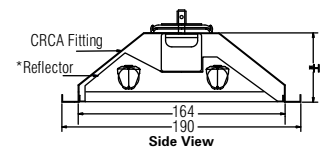
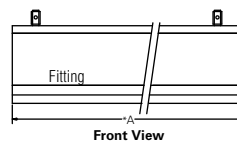
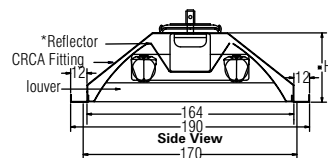
Electrochemically brightened, polished and anodised aluminium reflector for symmetrical light distribution in BFDAL series and asymmetrical light distribution in BFWAL series

Lamp and Accessories

Luminaire is suitable for twin 36W FTL lamp / 14/28W T5 lamp, electronic ballast wired upto flexi terminal block



spring locking system



Trunking System

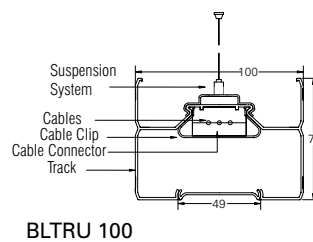
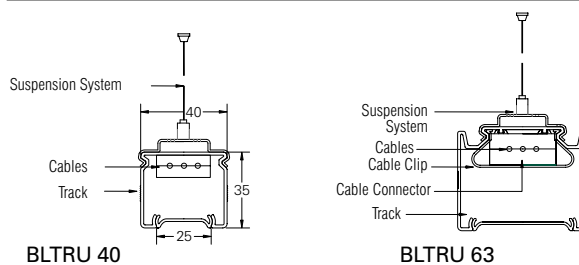
FLEXITRON



BLTRU 40
BLTRU 63
BLTRU 100

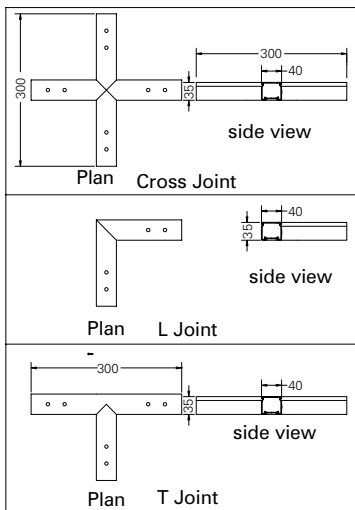
Luminaire Body

Epoxy white powder coated extruded aluminium channels with slots provided to suspend on State-of-art Millennium Suspension System (MSS). Casing and capping press fit attachment and decorative plastic end caps. Extra space is provided to run data cable and computer interface cables. Trunking system have different attachments i.e. Straight joints, Cross joints, L joints & T joints

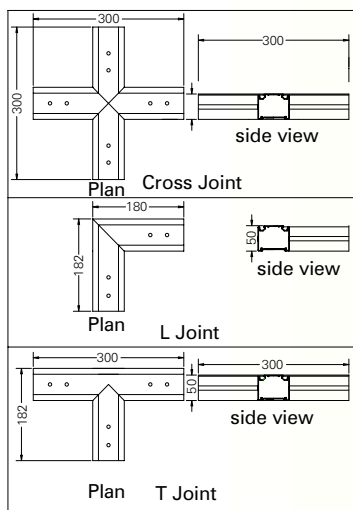




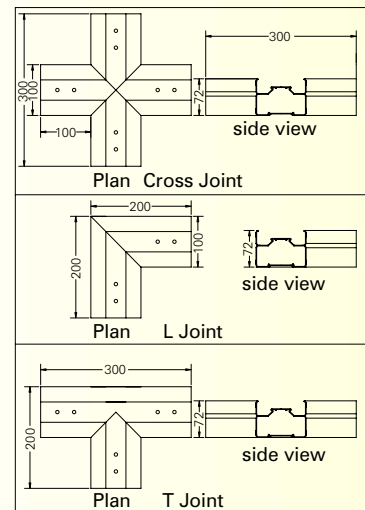
Schematic Line Diagram of Flexitron Range



XTL40



XTL63



XTL100

- Due to continuous efforts in developing products, improvement- Bajaj Electricals Limited reserves the right to make changes in the design and data and withdraw the luminaires without any prior notice.
- All product and installations are indicative.
- Technical information mention in this booklet is pre-released only.

Data subject to change due to improvement in the design, materials and processes. Variations in dimensions + 3mm

 **BAJAJ LUMINAIRE**
Making the difference

LUMINAIRE BUSINESS UNIT
 15/17, Sant Savta Marg, Reay Road, Mumbai - 400 010.
 Tel. : 23765000 Fax : 022-23730504
 E-mail: luminaires@bajajelectricals.com
 Website: www.bajajelectricals.com